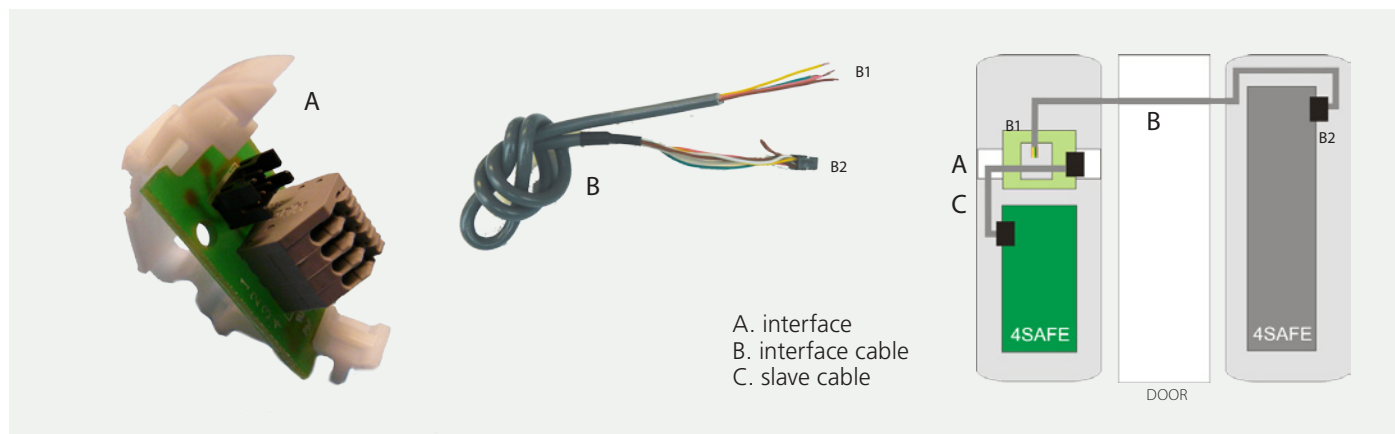


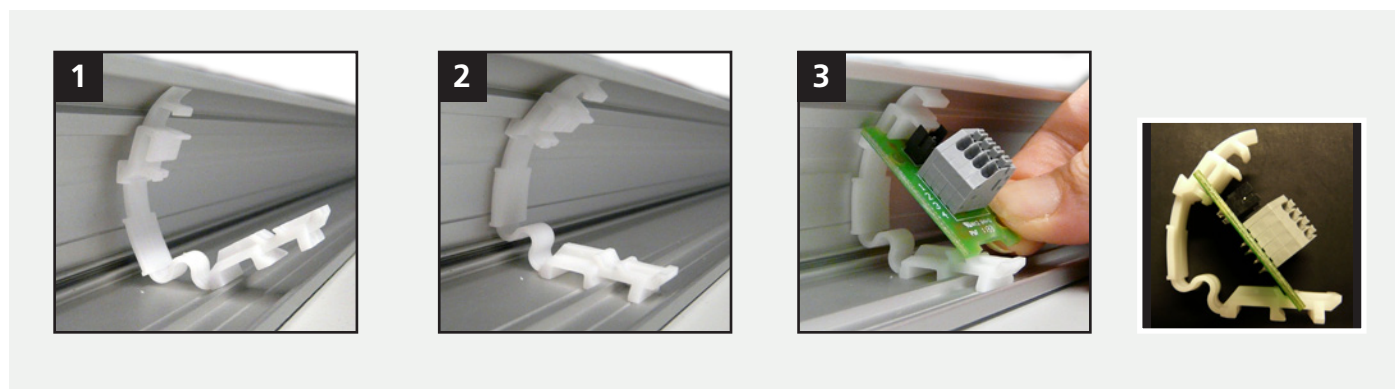
4SAFE FDA

FIRE DOOR ACCESSORY 1 INTERFACE

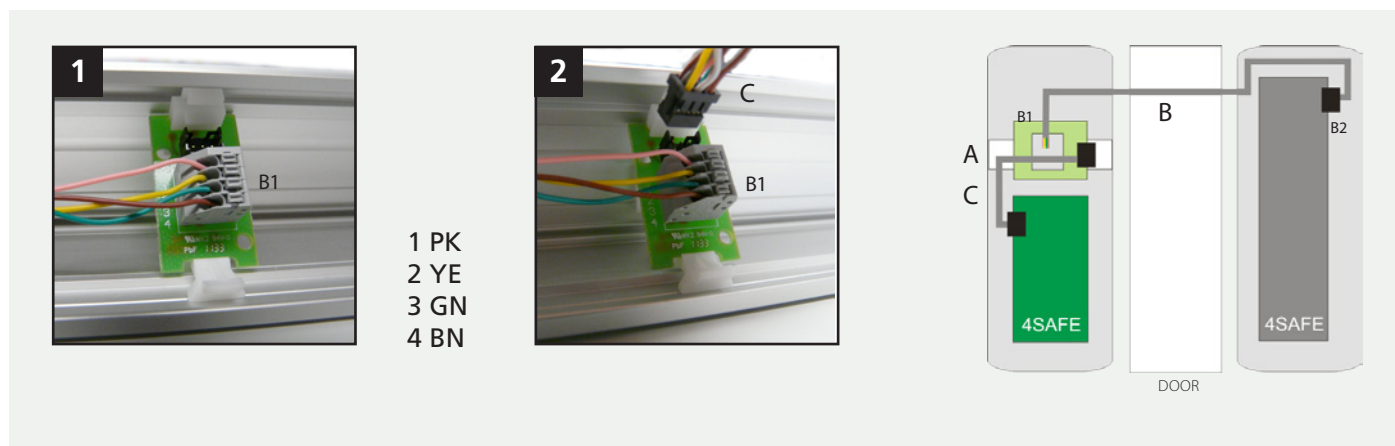
DESCRIPTION - BESCHREIBUNG



INSTALLATION



WIRING - CABLAGE - ANSCHLUSS



PK: pink, rose, rosa
YE: yellow, jaune, gelb

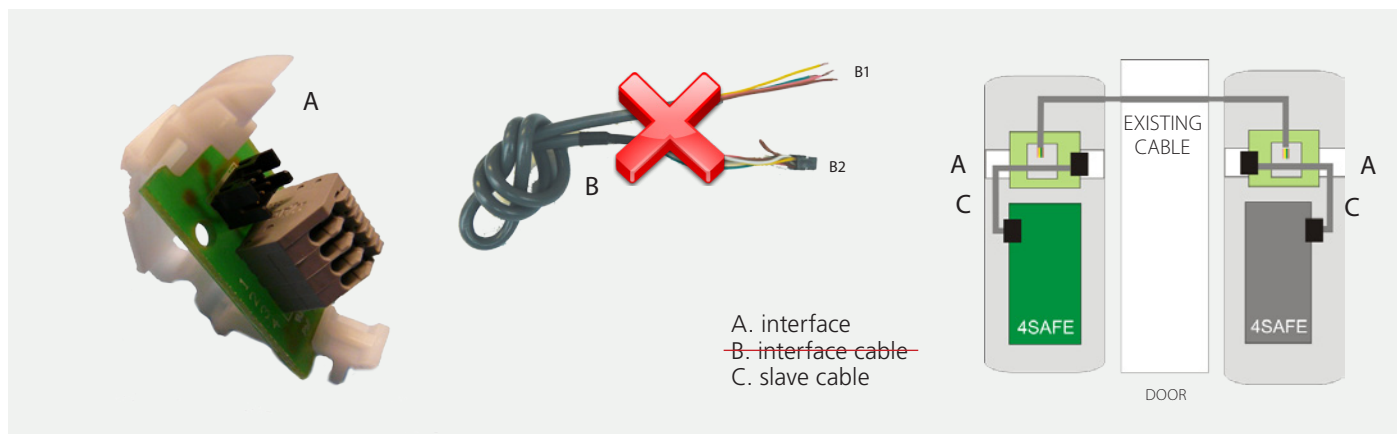
GN: green, vert, grün
BN: brown, brun, braun



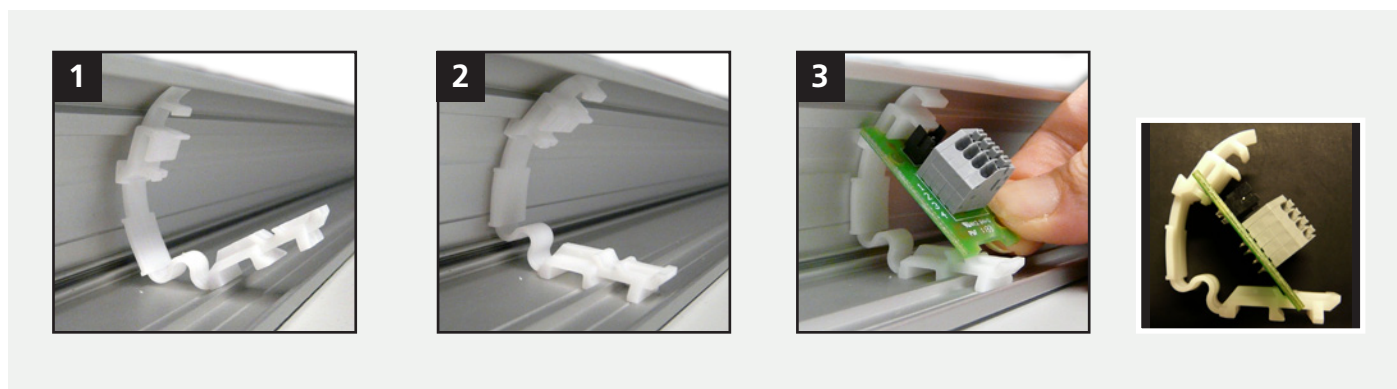
4SAFE FDA

FIRE DOOR ACCESSORY 2 INTERFACES

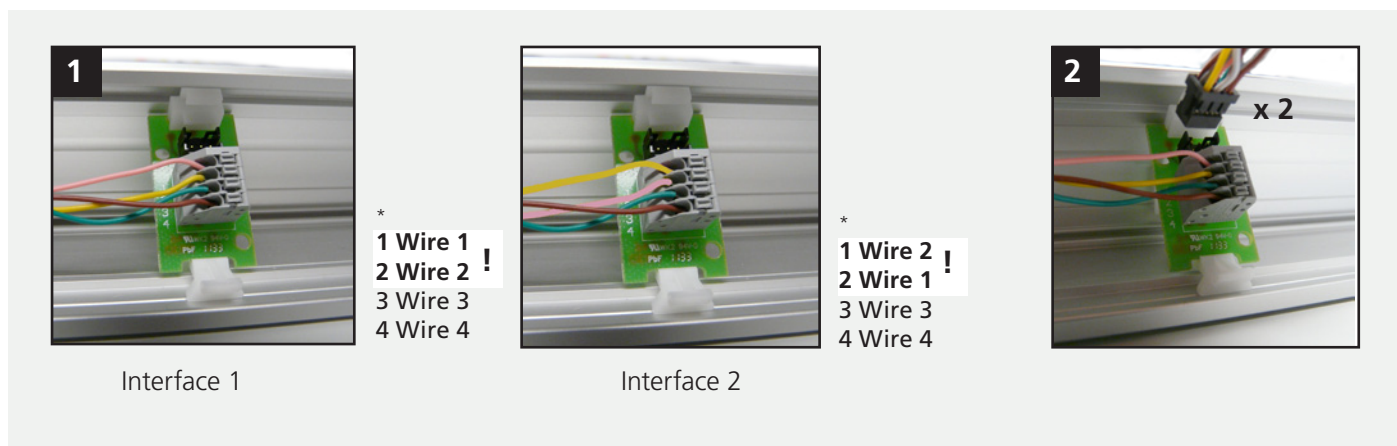
DESCRIPTION - BESCHREIBUNG



INSTALLATION



WIRING - CABLAGE - ANSCHLUSS



*depending on colour code of existing cable