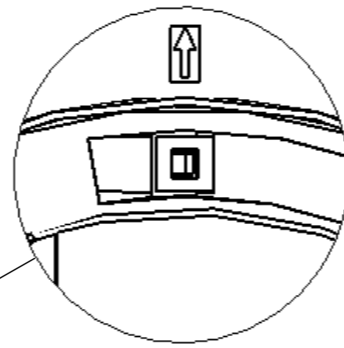
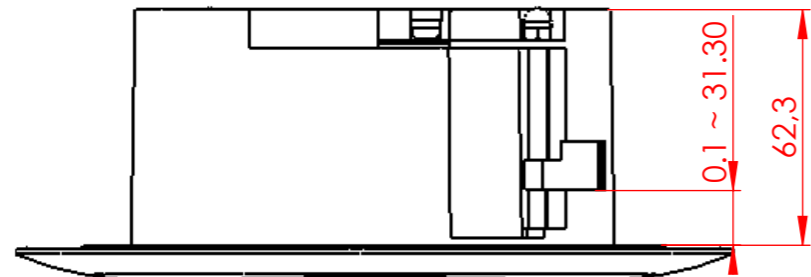


H G F E D C B A

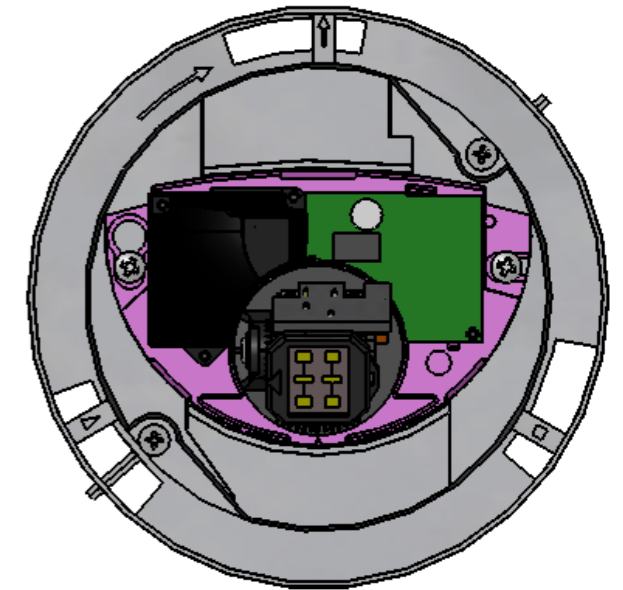
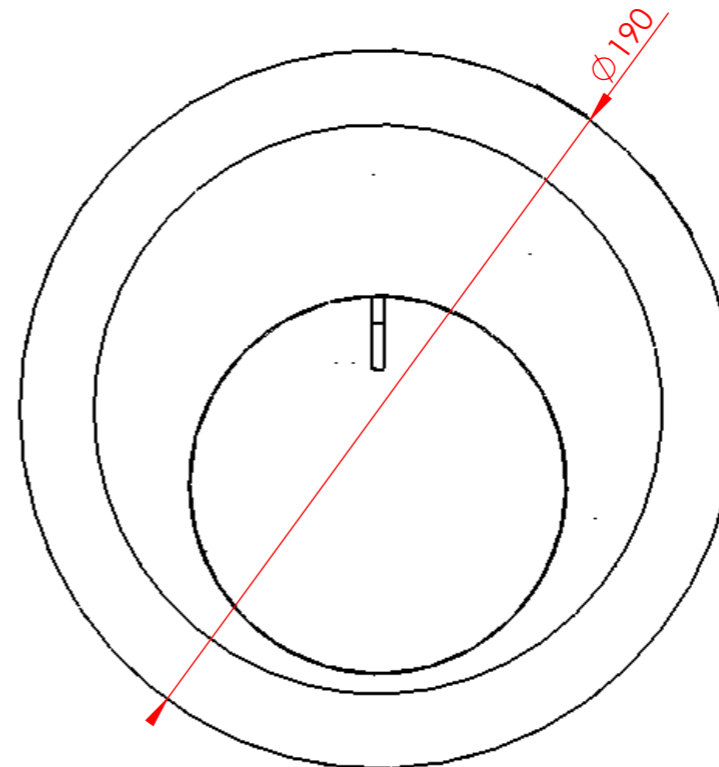
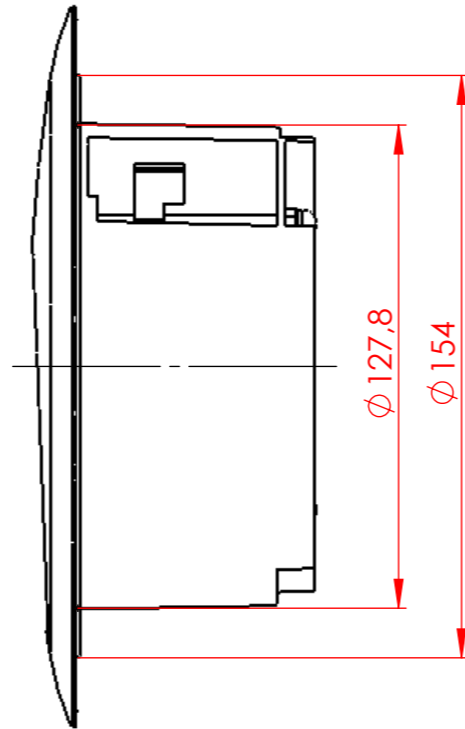
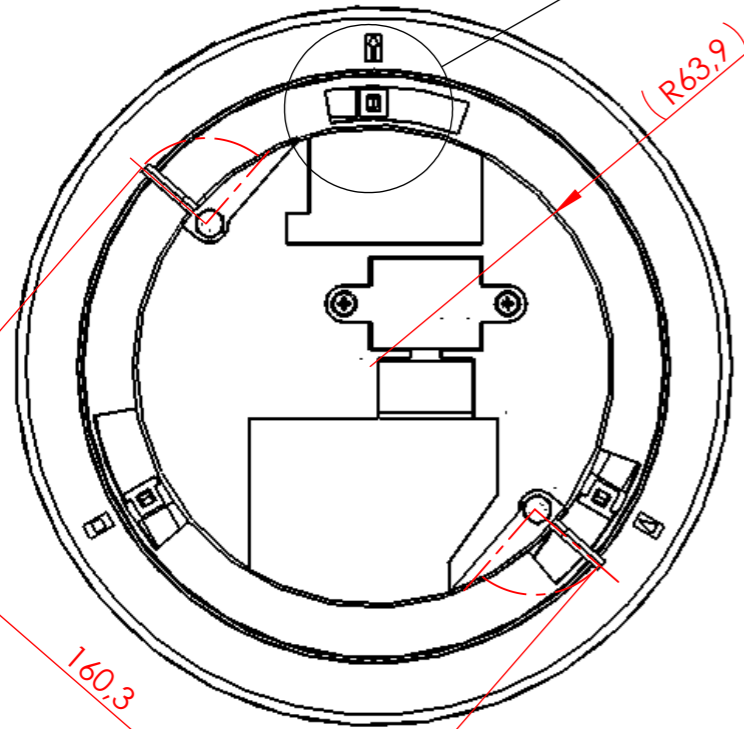
4

4



3

3



2

2

1

1

H G F E D C B A

Part Weight : 659.42 gr - Part Volume : mm³

THIS DRAWING IS THE PROPERTY OF BEA AND MAY NOT BE REPRODUCED WITHOUT WRITTEN AGREEMENT

MODIFICATIONS LIST

DATE :	BY :	DESCRIPTION :	REL :	VER :
28/02/05	NBE	Clamping nuts design modification	-	B
-	-	-	-	-
-	-	-	-	-
-	-	-	-	-



LIEGE Science Park
ALLEE DES NOISSETIERS 5
B-4031 ANGLEUR
BELGIUM
WWW.BEA.BE

PROD. NAME : ECA J	SC : 1:2	DRAWER : PhR
TITLE : ECA J Assembly	SIZE : A3	DATE : 25/02/2005
GENERAL TOLERANCE : -		VERIFIED APPROVED
MATERIAL : -	TRETEMENT : -	
C.A.O. FILE : D:_Travail\E131 - ECA\assy ECA JAPAN		
DOC.: PA	OBJET : 46.0407	VER.:A
		PAGE: 1 / 1