



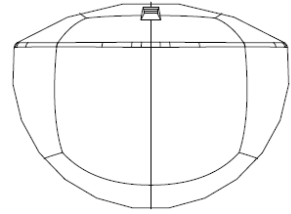
A Halma company



UK DECLARATION OF CONFORMITY

We, the undersigned,

BEA sa
Liège Science Park
Allée des Noisetiers, 5
4031 Angleur
Belgium



declare that this declaration of conformity is issued under our sole responsibility and belongs to the following product(s):

COLIBRI ONE unidirectional opening sensor for automatic doors

The object of the declaration described above is in conformity with the relevant UK legislation:

Radio Equipment Regulations 2017 (RE)

The Restriction of the Use of Certain Hazardous Substances in Electrical and Electronic Equipment Regulations 2012 (RoHS) and amendments

The following designated standards and other standards and technical specifications have been applied:

EN 300 440 v2.1.1 & v2.2.1	Short Range Devices (SRD); Radio equipment to be used in the 1 GHz to 40 GHz frequency range; Harmonised Standard for access to radio spectrum
EN 301 489-1 v1.9.2	ElectroMagnetic Compatibility (EMC) standard for radio equipment and services; Part 1: Common technical requirements
EN 301 489-3 v1.6.1	ElectroMagnetic Compatibility (EMC) standard for radio equipment and services; Part 3: Specific conditions for Short-Range Devices (SRD) operating on frequencies between 9 kHz and 246 GHz
EN 62368-1:2014 +AC:2015	Audio/video, information and communication technology equipment; Part 1: Safety requirements
EN 62479:2010	Assessment of the compliance of low power electronic and electrical equipment with the basic restrictions related to human exposure to electromagnetic fields (10 MHz to 300 GHz)

Signed for and on behalf of: **BEA sa**


Place and date of issue: **Angleur**

2022-09-13

Name and function: **Estelle Graas**

Product Compliance Manager

Signature:

DocuSigned by:

75A95ABC83E8492...

UK Authorised Representative:

Halma UK DS Ltd, Misbourne Court, Rectory Way, Amersham, Buckinghamshire, HP7 0DE, United Kingdom