

www.bea-sensors.com

A SENSING SOLUTION FOR EVERY INDUSTRIAL DOOR

44.0199 V4/01.18

**BEA
INDUSTRIAL AUTOMATION SOLUTIONS**

BEA sa (Headquarters)
LIEGE Science Park
Allée des Noisetiers 5
B-4031 Angleur
Belgium
T +32 4 361 65 65
F +32 4 361 28 58
E industrial@bea.be

A HALMA COMPANY



EN



INDUSTRIAL AUTOMATION SOLUTIONS

A sensing solution
for every industrial door



- 1 LZR-WIDESCAN
- 2 LZR-i100
- 3 CONDOR
- 4 FALCON
- 5 MILAN
- 6 IXIO-D INDUS
- 7 IXIO-S INDUS
- 8 MAGIC SWITCH IP65
- 9 MATRIX



MATRIX

INDUCTION LOOP CONTROLLER

- Digital controller of induction loops
- Reliable motion and presence vehicle detection
- Simple and intuitive adjustment
- Memory effect in case of power cut



COMFORT

PROTECTION

ENERGY EFFICIENCY

Technology

RADAR

The **RADAR sensor** is a detector transmitting and receiving **microwaves**. It transmits waves at an accurate frequency and analyses the returning signal at the same time. Every movement in the detection area will induce a frequency variation which will trigger a detection. The frequency will increase with approaching targets and decrease with receding ones. The radar sensor is a motion sensor that controls **the opening of the door**.



INFRARED

The **infrared sensor** for industrial applications transmits and receives **infrared energy** and uses the floor as a reflector. The sensor records a picture of the floor surface and compares the current picture with the reference picture. Each person or object present in the adjusted area will change the reference picture and induce a detection. This sensor informs about a presence within a determined surface, in order to keep the door open and **ensure the protection of the people** or the **monitoring of the area in front of the door**.



DUAL TECHNOLOGY

The **dual technology** combines the advantages of **microwaves** and **active infrared** in one housing. This solution is used to ensure the **opening** and **monitoring** in front of the door.



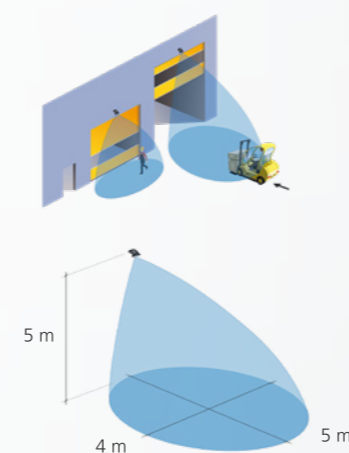
LASER

The **LASER technology** operates on the principle of time of flight: the transmitter sends an **impulse** at the speed of light, the time of the returning signal being measured. This measurement is converted in a distance. LASER sensors offer a comprehensive safety in 3 dimensions in front the door. They are mainly used for **the protection of people** and can cover areas until 10 m x 10 m.



INDUCTION LOOP

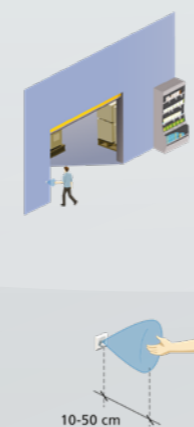
The **induction loop** consists of a **circuit** with an inductor - loop of copper wire - and a capacity having an own electric resonant frequency. The induction loop detects the presence of metallic objects. It is mainly used to **detect the presence of vehicles** in front of gates and garage doors.



FALCON

MOTION SENSOR

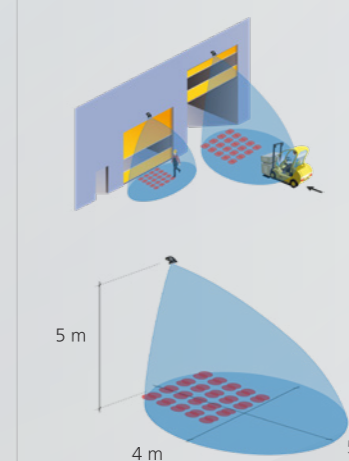
- Fast, reliable and targeted opening detection for pedestrians and vehicles
- Deep and wide detection area for higher user comfort
- Vehicle-only detection and parallel traffic filtering thanks to digital treatment
- IP65 degree of protection, industrial sturdiness and adaptation



MAGIC SWITCH IP65

INTENTIONAL OPENING SENSOR WITH IP65

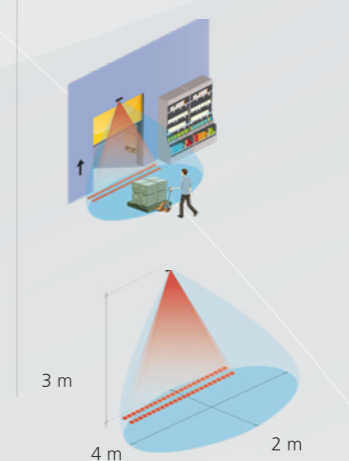
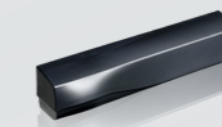
- Contactless proximity sensor
- Ideal protection against infiltration of dust and splash water
- Stable and repeatable detection area, adjustable from 10 cm to 50 cm
- Alternative to manual solutions (pull-cords, push-buttons...)
- Hygienic solution for sensitive environments (food industry, chemical and healthcare sectors, pharmaceutical industry, retail...)



CONDOR

MOTION & PRESENCE SENSOR

- Falcon and Milan advantages merged in the same housing
- Deep and wide detection area for higher user comfort
- Adjustable presence detection
- Improvement of the door protection and reduction of collision risks
- Alternative solution to induction loops with a quicker installation and service

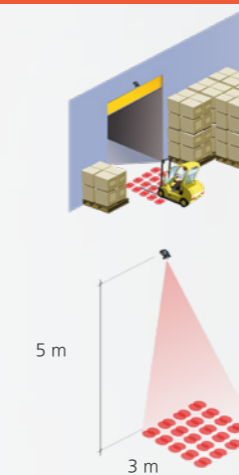


IXIO-D INDUS

MOTION & PRESENCE SENSOR

- Door opening and user protection
- Radar technology prevents collision between door and vehicles
- Increases protection of people thanks to 3-dimensional infrared curtains in front of the closing area of the door
- Mounting height until 4 m
- Quick and intuitive configuration via the multilingual LCD screen
- Easy positioning of the curtains thanks to 4 visible spots on the floor

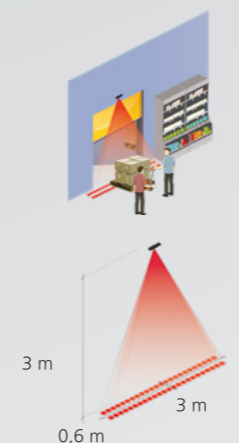
INFRARED



MILAN

PRESENCE SENSOR

- People and vehicle presence detection
- Improvement of the door protection and reduction of collision risk
- Possibility to adjust small and accurate opening detection fields for confined spaces
- Adjustable minimum object size

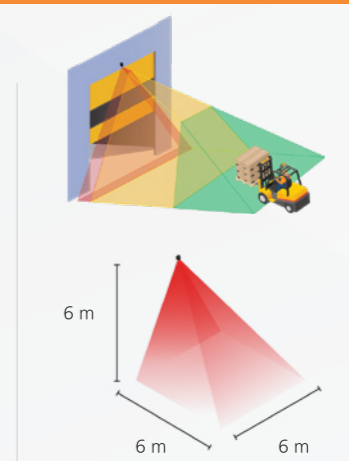


IXIO-S INDUS

PRESENCE SENSOR

- Presence detection
- Increases protection of people thanks to 3-dimensional infrared curtains in front of the closing area of the door
- Installation height until 4 m
- Quick and intuitive configuration via the multilingual LCD screen
- Easy positioning of the curtains thanks to 4 visible spots on the floor

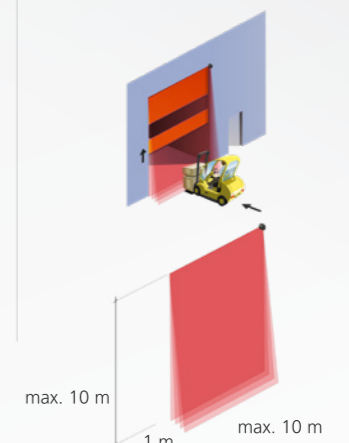
LASER



LZR-WIDESCAN

MOTION, PRESENCE & SAFETY SENSOR

- 7 tilted LASER curtains create a volumetric zone in front of the door
- Independence of floor, environment and weather conditions
- Energy savings thanks to a virtual pull cord, a partial opening function, parallel traffic rejection and pedestrian filter
- Optimizes door protection, user comfort and traffic flow



LZR-i100 / LZR-i110

SAFETY SENSOR

- 3D-safety on complete doorway
- Protection wall up to 10 m (H) x 10 m (L) x 1 m (D) with 4 LASER curtains. Compliance with EN 12455, EN 12453 and EN 12978 standards
- High precision and quality detection (16 000 measurements/sec)
- Possibility to create 2 opening areas
- LZR-i110: maximal detection range of 5 m x 5 m