

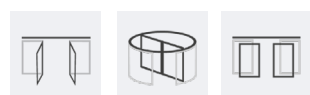


# EAGLE

Opening sensor for all types of automatic doors



## APPLICATIONS



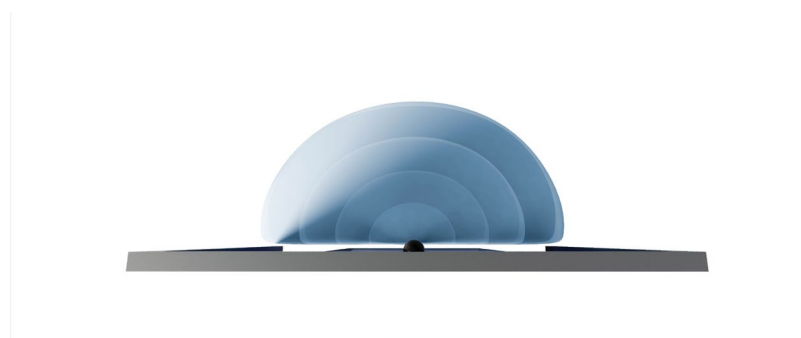
## TECHNOLOGY

Radar



## DESCRIPTION

The **EAGLE** is a microwave sensor which can be mounted on all types of automatic doors, irrespective of the surroundings. The EAGLE ONE is a unidirectional motion sensor for standard automatic doors. The EAGLE ONE HM can be used for high mounting up to 5 m. Configuration of parameters is flexible and easy via the remote control or push buttons.



### Energy-saving

Improvement of the energy efficiency of buildings thanks to the unidirectional radar, which detects approaching movements and filters out movements moving away: the door closes earlier and reduces heat loss.

### Stability & reliability

Thanks to the BEA planar antenna and its unidirectional detection mode, the EAGLE offers an high level of stability and reliability.

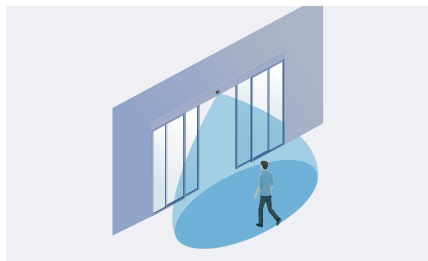
### Flexibility

The size and shape of the detection fields can be adapted according to your environment and application.

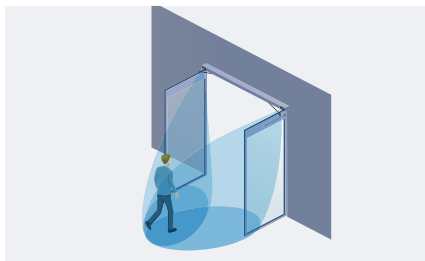
### Alternative mounting possibilities

Possibility to mount the sensor in the floor or in the ceiling. When placed above the hinges of a swing door, the sensors ignores the closing movement of the doors.

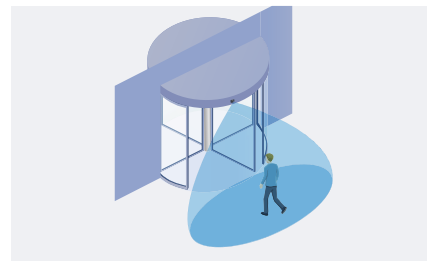
## APPLICATIONS



Sliding doors



Double swing doors



Revolving doors

## ACCESSORIES



### BEA REMOTE CONTROL

Universal remote control for the adjustments of our sensors



### EAGLE CA

Ceiling Accessory



### EAGLE BA

Bracket Accessory



### EAGLE/SPARROW ORA

Rain Accessory for EAGLE & SPARROW



### EAGLE RA

Rain Accessory

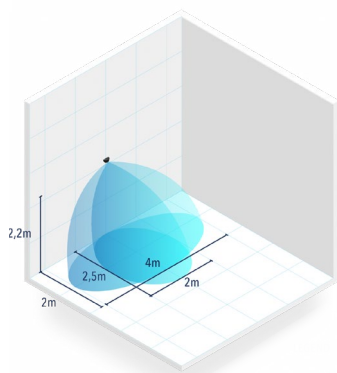
## INSTALLATION

- Adjustment of basic functions with push buttons.
- Fine tuning with the universal BEA coded infrared remote control.

## VERSIONS

- EAGLE ONE : unidirectional sensor for all types of doors.
- EAGLE ONE HM : unidirectional sensor for high mounting.

## TECHNICAL SPECIFICATIONS



<b>Technology</b>	Microwave and microprocessor
<b>Transmitter frequency</b>	24.150 GHz
<b>Supply voltage</b>	12V to 24V AC $\pm 10\%$ ; 12V to 24V DC $+30\%$ / $-10\%$
<b>Max power consumption</b>	< 2 W
<b>Output</b>	Relay (free of potential change-over contact)
<b>EAGLE ONE / ONE HM</b>	Max. contact voltage: 42V AC/DC Max. contact current: 1A (resistive) Max. switching power: 30W (DC) / 42VA (AC)
<b>Mounting height</b>	EAGLE ONE: 1,8 m to 4 m; EAGLE ONE HM: 4 m to 5 m; EAGLE THREE-N : 1,8 m to 4 m
<b>Degree of protection</b>	IP54
<b>Dimensions</b>	120 mm (L) x 80 mm (H) x 50 mm (W)
<b>Tilt angles</b>	0° to 90° vertical; -30° to +30° lateral
<b>Material</b>	ABS
<b>Weight</b>	215 g
<b>Norm conformity</b>	EN 300 440-2 V1.4.1, EN 301 489-1 V1.9.2, EN 301 489-3 V1.6.1, EN 62311, EN 62479

**DISCLAIMER** Information is supplied upon the condition that the persons receiving it will make their own determination as to its suitability for their purposes prior to use. In no event will BEA be responsible for damages of any nature whatsoever resulting from the use of or reliance upon information from this document or the products to which the information refers. BEA has the right without liability to change descriptions and specifications at any time.

[WWW.BEASENSORS.COM](http://WWW.BEASENSORS.COM)



BEA s.a. / LIEGE Science Park / Allée des Noisetiers 5 / 4031 Angleur • BELGIUM  
T +32 (0)4 361 65 65 / F +32 (0)4 361 28 58 / E info-eu@beasensors.com

A Halma company