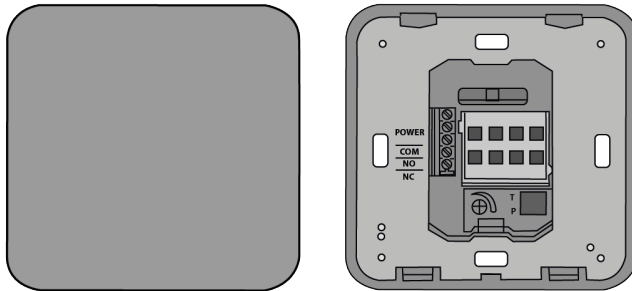


MAGIC SWITCH

Contactless knowing act sensor for automatic doors

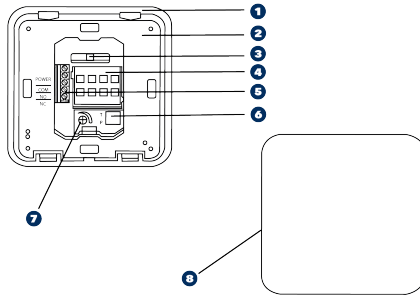
1. INTENDED USE

The Magic Switch is a touchless opening sensor for automatic doors. One hand motion in front of the sensor opens the door, completely contactless. Therefore, it is the perfect knowing act sensor for applications where hygiene is essential: hospitals, clean rooms, hotels & restaurants, pharmaceutical industries, airports, logistics and retail.



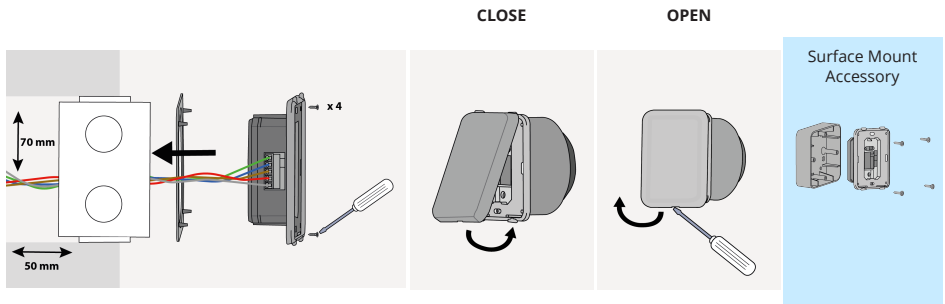
- The sensor cannot be used for purposes other than its intended use.
- The manufacturer of the door system incorporating the sensor is responsible for compliance of the system to applicable national and international regulations and safety standards.
- The installer must read, understand and follow the instructions given in this manual. Improper installation can result in improper sensor operation.
- The manufacturer of the sensor cannot be held responsible for injury or damage resulting from incorrect use, installation or inappropriate adjustment of the sensor.

2. DESCRIPTION

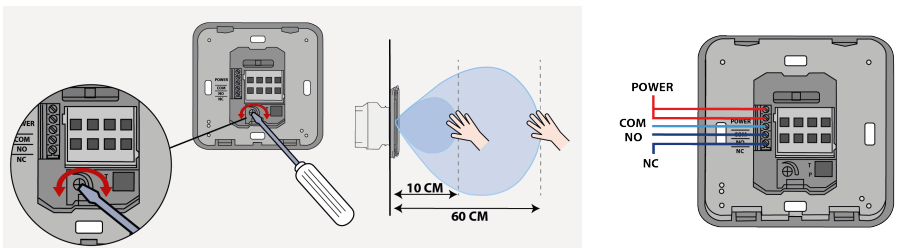


- 1** Gasket
- 2** Fixing frame
- 3** LED
- 4** Antenna
- 5** Terminal block
- 6** DIP - Switch
- 7** Field size adjustment
- 8** Front face

3. MOUNTING

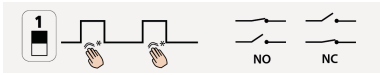


4. DETECTION FIELD



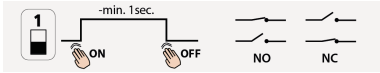
5. DIP-SWITCH SETTINGS

DIP 1 : OUTPUT MODE

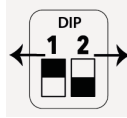


Pulse Mode : Recommended for automatic doors applications.

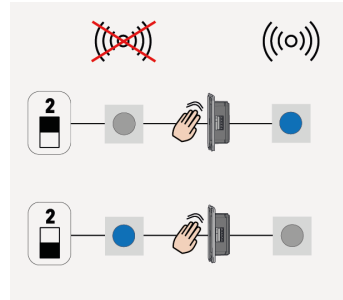
**Door opens and closes*



Toggle Mode : Recommended for switch applications.




DIP 2 : COLOUR LOGIC





6. TROUBLESHOOTING

Status	Explanation / Solution
Door does not open even when moving the hand towards the sensor.	Bad or no power supply. Check power supply. If LED switches on or flashes, power connection is OK.
	Incorrect wiring / connection. Check wiring and relay connection.
	Detection range is too short. 1. Adjust the detection range. 2. Remove any metal plates in front of the sensor.
Sensor stays in detection.	The environment influences the good functioning of the sensor. Remove any moving object around the sensor.
	Incorrect wiring / connection. Check wiring and relay connection.
Door remains open after detection/ activation.	Wrong output mode. Switch the output mode to PULSE.
	Incorrect wiring / connection. Check wiring and relay connection.

7. TECHNICAL SPECIFICATIONS

Technology	Microwave motion sensor
Radiated frequency	24.150 GHz
Radiated power	< 20 dBm EIRP
Radiated power density	< 5mW/cm ²
Detection range (hand)	+/- 10 to 60 cm if movement towards sensor at 90° (adjustable)*
Detection mode	Motion (bidirectional)
Speed of target to create detection	Min. 5Hz or +/- 3cm/s, Max. 200Hz or +/- 1.2m/s
Supply voltage	12 - 24V AC +/- 10% (50 - 60 Hz) 12 - 24V DC +30% / - 10%
	 CAUTION External electrical sources must be within specified voltages, max 15W and ensure double insulation from primary voltages.
Power consumption	< 1.5W
Output	Relay with switch-over contact (voltage free) 60V DC / 30 VAC 1A (resistive) 15W
Output hold time	0.5s (in PULSE mode)
Temperature range	-20°C to +55°C
Degree of protection	IP54 with front face and gasket mounted on a smooth surface
Material	PC
Wiring cable	Stranded cable up to 16 AWG - 1.5mm ²
<p>*An adjustment of the detection field below 10 cm is possible but the detection capability of the sensor can not be guaranteed.</p>	

8. CONFORMITY

<p>BEA hereby declares that this product is in compliance with European Directives 2014/53/EU (RED) and 2011/65/EU (RoHS).</p>	
<p>The full text of the EU declaration of conformity is available on our website. This product should be disposed of separately from unsorted municipal waste.</p>	



www.beasensors.com

BEA SA | LIEGE Science Park | ALLÉE DES NOISETIERS 5 - 4031 ANGLEUR [BELGIUM] | T +32 4 361 65 65 | F +32 4 361 28 58 | info-eu@beasensors.com | WWW.BEASENSORS.COM

A **Halma** company

Manufactured by: BEA SA - LIEGE Science Park - Allée des Noisetiers 5 - 4031 Angleur - Belgium - T +32 4 3616565 - F +32 4 3612858 - info-eu@beasensors.com - www.beasensors.com

PLEASE KEEP FOR FURTHER USE - DESIGNED FOR COLOUR PRINTING