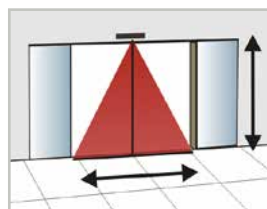


VIO

Safety Prisms

You can easily adapt the width, position and energy of the infrared curtains by using one of our various prisms.

Make sure both the total width of the door opening and the total height of the closing edge are covered. Always test the good functioning of the installation before leaving the premises.



The VIO sensors for sliding doors are equipped with one or two of the following standard prisms (depending on the version):

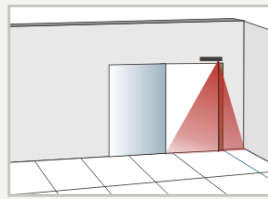
STANDARD	2 m			<table border="1"> <thead> <tr> <th>H</th> <th>W</th> </tr> </thead> <tbody> <tr> <td>2.20 m</td> <td>2.35 m</td> </tr> <tr> <td>2.50 m</td> <td>2.50 m</td> </tr> <tr> <td>3.00 m</td> <td>2.70 m</td> </tr> </tbody> </table>	H	W	2.20 m	2.35 m	2.50 m	2.50 m	3.00 m	2.70 m
	H	W										
2.20 m	2.35 m											
2.50 m	2.50 m											
3.00 m	2.70 m											
				The energy is divided over 2 rows of 24 spots each.								
	1 m			<table border="1"> <thead> <tr> <th>H</th> <th>W</th> </tr> </thead> <tbody> <tr> <td>2.20 m</td> <td>1.35 m</td> </tr> <tr> <td>2.50 m</td> <td>1.50 m</td> </tr> <tr> <td>3.00 m</td> <td>1.70 m</td> </tr> </tbody> </table>	H	W	2.20 m	1.35 m	2.50 m	1.50 m	3.00 m	1.70 m
H	W											
2.20 m	1.35 m											
2.50 m	1.50 m											
3.00 m	1.70 m											
				The energy is divided over 2 rows of 12 spots each and therefore more intensive.								

Furthermore, there are specially designed, so called masked prisms to adapt the detection field to your specific needs (sold individually). **Caution:** Do not mask the prisms yourself. This could lead to unsafe door installations.

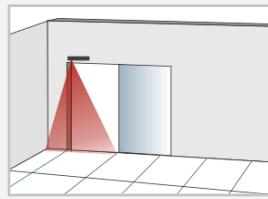
OTHER 1 M PRISMS	1 m centre			The energy is divided over 2 rows of 12 spots each, but less powerfull because of the masking stickers.	
			Suited for highly reflective environments.		
		1 m left			
	1 m right				

COMBINED 1M / 0.5 M PRISMS

1 m left /
0.5 m right

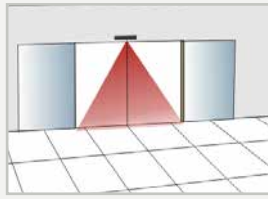


1 m right /
0.5 m left



XL PRISM

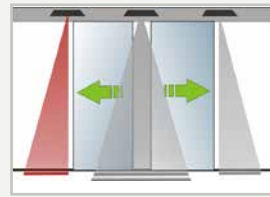
2.6 m



This prism does not allow DIN 18650-conformity.

0.5 M PRISMS

0.5 m left high

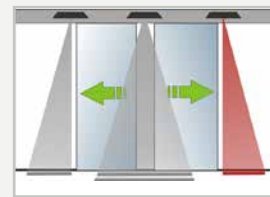


0.5 m left

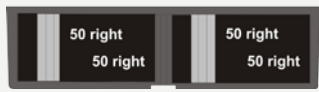


Suited for highly reflective environments.

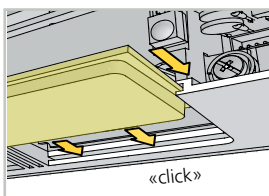
0.5 m right high



0.5 m right



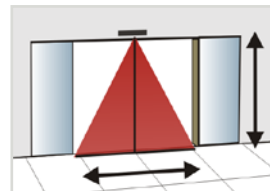
Suited for highly reflective environments.



Always make sure to insert the prism correctly into the guiding grooves in the base of the sensor and not in the sensor cover.



It is recommended to clean the prisms and optical parts of the sensor at least once a year (or more often if required due to environmental conditions).



The width of the detection field depends on the mounting height. All dimensions specified in this document are measured at a mounting height of approx. 2 m.



The prisms allow EN 16005 conformity up to a mounting height of 3 m, unless specified otherwise.