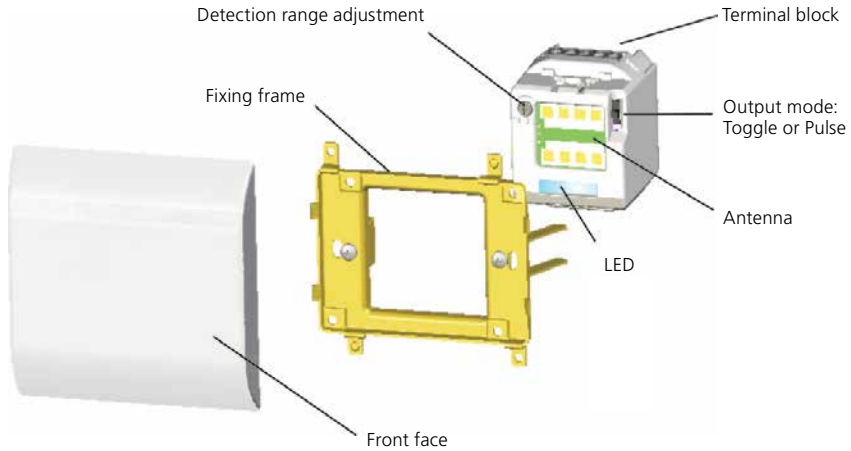


MAGIC SWITCH

Contactless knowing act sensor
for automatic doors

DESCRIPTION



LED SIGNALS



LED flashes



LED is OFF

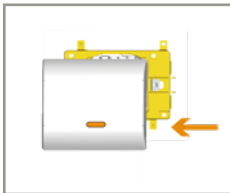


LED switches ON

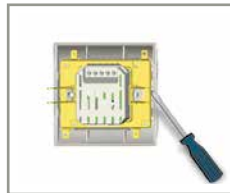
TOOLS



INSTALLATION TIPS



When clipping the front face, make sure the LED zone is at the bottom.



Use the screwdriver to remove the front face.



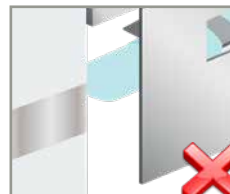
Do not force when turning the adjustment screw.



In order to increase water resistance, place a silicone seal on the front cover.



The sensor can be placed behind tiles, wood, plaster, plastic and glass.



Do not place the sensor behind metallic surfaces.

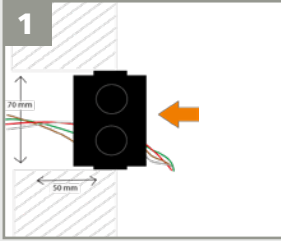


Do not place the sensor in the opening range of the door.

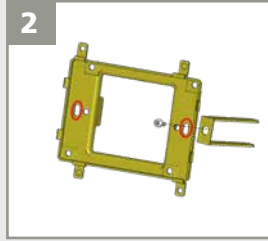


Avoid moving objects in front of the sensor.

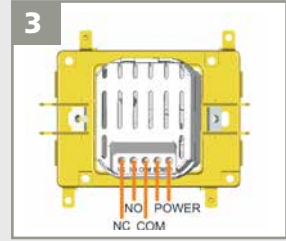
INSTALLATION



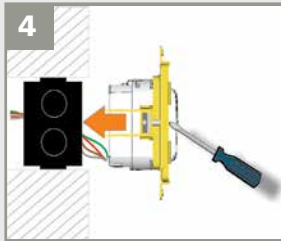
Make a hole and insert the recessed box into the opening. Pull the wires through the box.



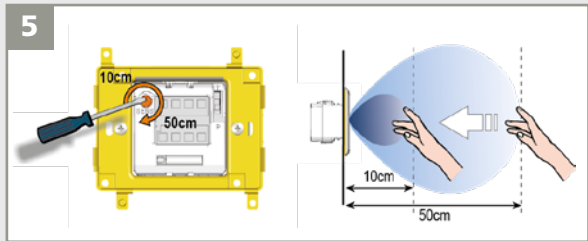
If you do not use the fixation brackets, unscrew them. Fix the screws of the recessed housing in the oval holes.



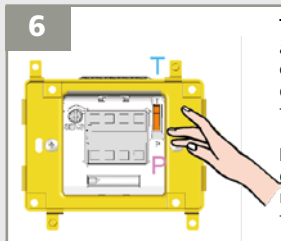
Connect the wires to the terminal block. After connection, the LED flashes.



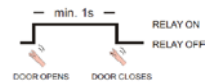
Insert the housing into the recessed box and tighten the screws.



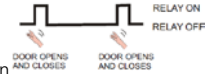
Adjust the detection range according to the future application. The detection range depends on the trajectory of movement, size and type (material) of the detected object.



TOGGLE MODE (T): Recommended for switch applications. The first detection activates the relay output and the second detection deactivates it. In door applications the door remains open after the first activation.



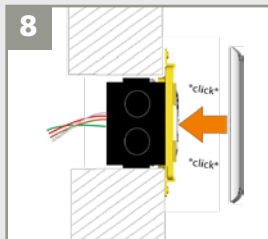
PULSE MODE (P): Recommended for automatic doors applications. The first detection activates the relay output for a short period of time (depending on the duration of the movement in front of the sensor).



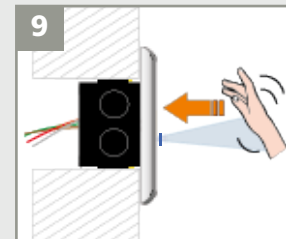
Make sure the output mode is set to PULSE-mode (P) for standard door applications.



In order to increase water resistance, place a silicone seal on the front cover.










Clips the front cover on the fixation bracket. Make sure the LED zone is at the bottom, otherwise you risk damaging the front face when trying to clips it.

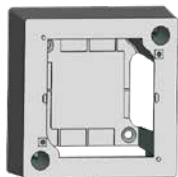


Make sure the LED-signal is visible and test the good functioning of the sensor by moving the hand towards the sensor.

TROUBLESHOOTING

The door does not open even when moving the hand towards the sensor.		Bad or no power supply.	Check power supply. <i>If LED switches on or flashes, power connection is OK.</i>
		Detection range is too small.	Adjust the detection range. Remove any metal plates in front of the sensor.
		Wrong connection.	Check wiring and relay connection.
The door remains permanently open.		The environment influences the good functioning of the sensor.	Remove any moving object close to the sensor.
		Wrong connection.	Check wiring and relay connection.
The door remains open after detection/activation.		Wrong output mode.	Switch the output mode to PULSE mode.
		Wrong connection.	Check wiring and relay connection.

ACCESSORIES AND OPTIONS



Magic Switch visible box



Magic Switch system 55 GIRA ADAPTER



Magic Switch logo in laser engraving



Magic Switch logo sticker

TECHNICAL SPECIFICATIONS

Technology	Microwave motion sensor
Radiated frequency	24.150 GHz
Radiated power density	<< 5mW/cm ²
Detection range (hand)	+/- 10 to 50 cm if movement towards sensor at 90° (adjustable)*
Detection mode	Motion (bidirectional)
Speed of target to create detection	Min. 5Hz or +/- 3cm/s, Max. 200Hz or +/- 1.2m/s
Supply voltage	12 - 24V AC +/- 10% 12 - 24V DC +30% / - 10%
Mains frequency	50 - 60 Hz
Power consumption	< 1.2W
Output	Relay with switch-over contact (free of potential)
Max. voltage	48V AC - 60V DC
Max. current	1A (resistive)
Max. switching power	30W (DC) / 48VA (AC)
Output hold time	0.5s (in PULSE mode)
Temperature range	-20°C to +55°C
Degree of protection	IP30 with cable connected IP40 flush-mounted without front face IP52 flush-mounted with front face and silicone seal mounted in surface mount box
Norm conformity	RED 2014/53/EU et 2011/65/EU
Material	ABS / PC
Colour	White
Recommended wiring cable	Stranded cable up to 16 AWG - 1.5mm ²

* An adjustment of the detection field below 10 cm is possible but the detection capability of the sensor can not be guaranteed.

Specifications are subject to change without prior notice



BEA SA | LIEGE Science Park | ALLÉE DES NOISÉTIERS 5 - 4031 ANGLEUR (BELGIUM) | T +32 4 361 65 65 | F +32 4 361 28 58 | INFO@BEA.BE | WWW.BEA-SENSORS.COM



BEA hereby declares that the MAGIC SWITCH is in conformity with the basic requirements and the other relevant provisions of the directives 2014/53/EU et 2011/65/EU.

The complete declaration of conformity is available on our website.



EC countries: according to the directive 2012/19/EU for Waste Electrical and Electronic Equipment (WEEE)