



# FALCON

Opening sensor for industrial doors



## APPLICATIONS



## TECHNOLOGY

Radar

## DESCRIPTION

The **FALCON** is a unidirectional motion sensor optimizing the performance of automatic doors. The FALCON detects every type of target and can filter people. Detecting vehicles only allows to reduce the door closing cycle by rejecting cross-traffic. Mounted at 7 m the FALCON has a detection field of 4 x 5 m. At 3.5 m, the FALCON XL detects in an area of 4 x 2 m.

## VIDEO

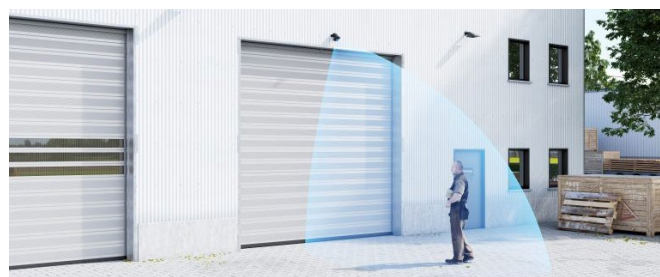


Discover the product video on our youtube channel **BEA Sensors Europe**  
<https://bit.ly/2MW5knm>



### Energy-saving

Unidirectional motion detection for an optimum door closing cycle generating energy savings.



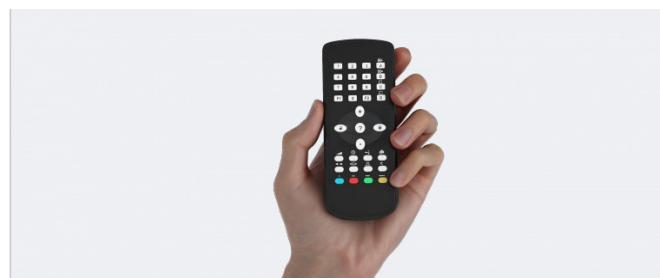
### Pedestrian filter

Possibility of filtering pedestrians and detecting vehicles only.



### Cross-traffic filter

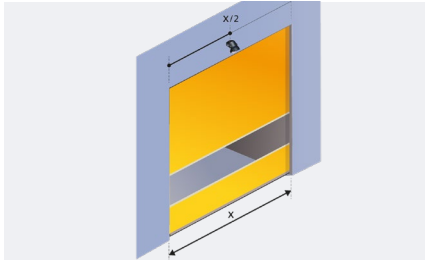
Possibility of filtering cross-traffic to eliminate unwanted detection.



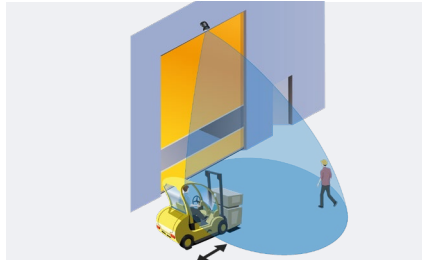
### Plug & play

Adjustment of basic functions with push buttons or remote control.

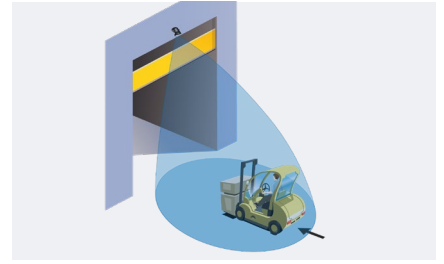
## APPLICATIONS



Recommended mounting for best performances



Cross-traffic filtering



Pedestrian filtering and detection of vehicles only

## ACCESSORIES



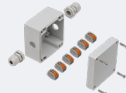
### BEA REMOTE CONTROL

Universal remote control for the adjustments of our sensors



### UNIVERSAL MOUNTING BA

Universal mounting bracket



### LZR@-WIDESCAN RETROFIT ADAPTER

Wiring accessory to replace a CONDOR, FALCON or MILAN with a WIDESCAN for similar functions

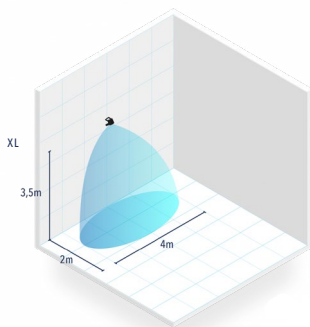
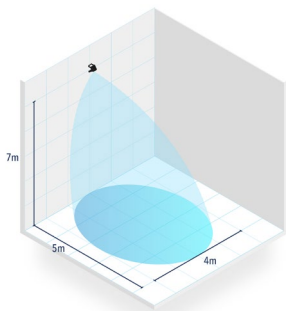
## INSTALLATION

- Simple «plug and play» installation.
- Flexible operation thanks to the remote control and the spotfinder.

## VERSIONS

- FALCON: 9-patch antenna for mounting till 7 m.
- FALCON XL: 3-patch antenna for mounting till 3.5 m.

## TECHNICAL SPECIFICATIONS



<b>Technology</b>	microwave doppler radar
<b>Transmitter frequency</b>	24.150 GHz
<b>Transmitter radiated power</b>	< 20 dBm EIRP
<b>Transmitter power density</b>	< 5 mW/cm <sup>2</sup>
<b>Detection mode</b>	motion
<b>Detection zone</b>	FALCON: 4 x 5 m ; FALCON XL: 4 x 2 m (typical at 30° and field size 9)
<b>Min. detection speed</b>	5 cm/s
<b>Supply voltage</b>	12V to 24V AC ±10%; 12V to 24V DC +30% / -10%
<b>Mains frequency</b>	50 to 60 Hz
<b>Max power consumption</b>	< 2 W
<b>Output</b>	relay (free of potential change-over contact)
<b>Max. contact voltage</b>	42V AC/DC
<b>Max. contact current</b>	1A (resistive)
<b>Max. switching power</b>	30W (DC) / 60VA (AC)
<b>LED-signal</b>	red: detection state, parameter indication; green: value indication
<b>Mounting height</b>	FALCON: 3,5 m - 7 m FALCON XL: 2 m - 3,5 m
<b>Degree of protection</b>	IP65
<b>Temperature range</b>	from -30 °C to + 60 °C
<b>Dimensions</b>	127 mm (L) x 102 mm (H) x 96 mm (W)
<b>Tilt angles</b>	0° to 180° vertical
<b>Materials</b>	ABS and polycarbonate
<b>Weight</b>	400 g
<b>Cable length</b>	10 or 15 m
<b>Norm conformity</b>	EN 300 440-2 V1.4.1, EN 301 489-1 V1.9.2, EN 301 489-3 V1.6.1, EN 62311, EN 62479

**DISCLAIMER** Information is supplied upon the condition that the persons receiving it will make their own determination as to its suitability for their purposes prior to use. In no event will BEA be responsible for damages of any nature whatsoever resulting from the use of or reliance upon information from this document or the products to which the information refers./BEA has the right without liability to change descriptions and specifications at any time.

[WWW.BEASENSORS.COM](http://WWW.BEASENSORS.COM)