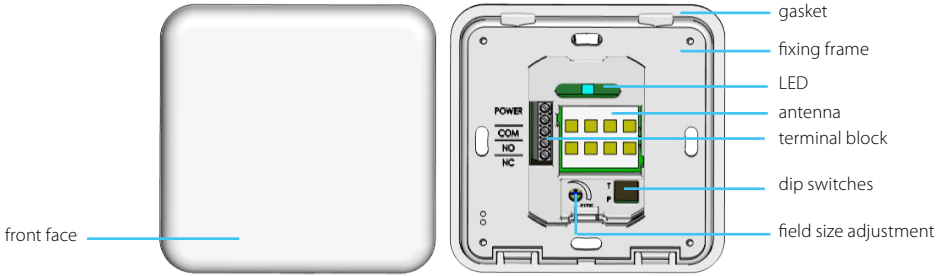


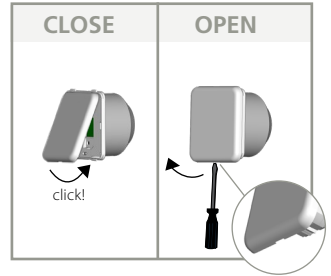
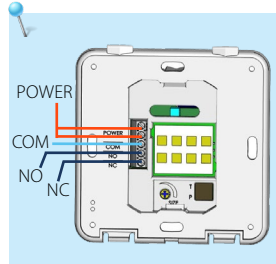
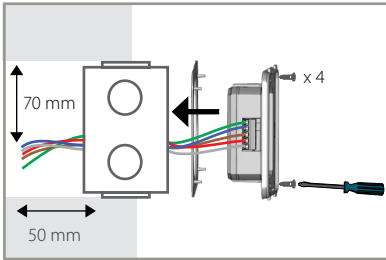
# MAGIC SWITCH

CONTACTLESS KNOWING ACT SENSOR  
FOR AUTOMATIC DOORS

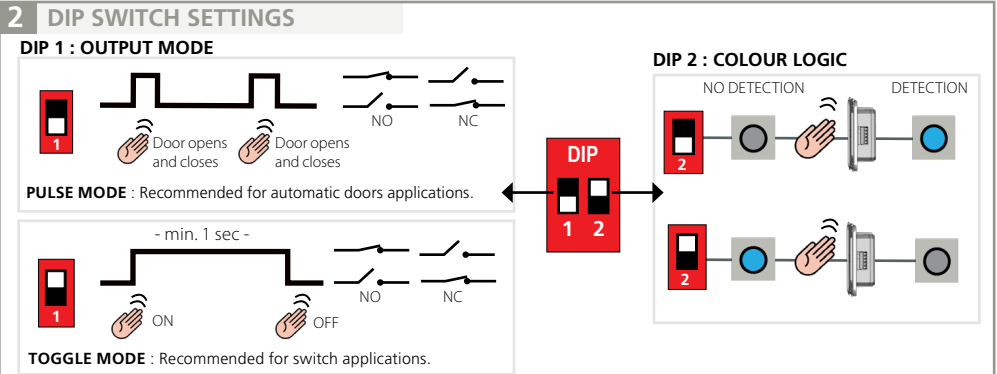
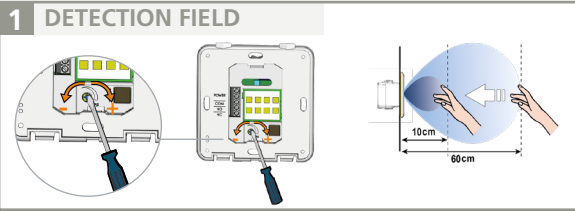
## DESCRIPTION



## INSTALLATION



## ADJUSTMENTS



## TROUBLESHOOTING

Door does not open even when moving the hand towards the sensor.	Bad or no power supply.	Check power supply. <i>If LED switches on or flashes, power connection is OK.</i>
	Detection range is too short.	Adjust the detection range. Remove any metal plates in front of the sensor.
	Incorrect wiring / connection.	Check wiring and relay connection.
Sensor stays in detection.	The environment influences the good functioning of the sensor.	Remove any moving object around the sensor.
	Incorrect wiring / connection.	Check wiring and relay connection.
Door remains open after detection/activation.	Wrong output mode.	Switch the output mode to PULSE.
	Incorrect wiring / connection.	Check wiring and relay connection.

## TECHNICAL SPECIFICATIONS

<b>Technology</b>	Microwave motion sensor
<b>Radiated frequency</b>	24.150 GHz
<b>Radiated power</b>	< 20 dBm EIRP
<b>Radiated power density</b>	< 5mW/cm <sup>2</sup>
<b>Detection range (hand)</b>	+/- 10 to 60 cm if movement towards sensor at 90° (adjustable)*
<b>Detection mode</b>	Motion (bidirectional)
<b>Speed of target to create detection</b>	Min. 5Hz or +/- 3cm/s, Max. 200Hz or +/- 1.2m/s
<b>Supply voltage</b> The Equipment must be powered by an approved Class II SELV limited power source. This requirement consists of the need for double insulation between primary voltages and the Equipment supply. The supply current should be limited to 1.5 A	12 - 24V AC +/- 10% 12 - 24V DC +30% / - 10%
<b>Mains frequency</b>	50 - 60 Hz
<b>Power consumption</b>	< 1.5W
<b>Output</b> Max. voltage Max. current Max. switching power	Relay with switch-over contact (voltage free) 60V DC / 48 VAC 1A (resistive) 30W (DC) / 48 VA (AC)
<b>Output hold time</b>	0.5s (in PULSE mode)
<b>Temperature range</b>	-20°C to +55°C
<b>Degree of protection</b>	IP54 with front face and gasket mounted on a smooth surface
<b>Material</b>	PC
<b>Recommended wiring cable</b>	Stranded cable up to 16 AWG - 1.5mm <sup>2</sup>

\* An adjustment of the detection field below 10 cm is possible but the detection capability of the sensor can not be guaranteed.

**Technical specifications are subject to changes**

BEA SA | LIEGE Science Park | ALLÉE DES NOISSETIERS 5 - 4031 ANGLEUR [BELGIUM] | T +32 4 361 65 65 | F +32 4 361 28 58 | INFO@BEA.BE | WWW.BEASENSORS.COM



BEA hereby declares that the Magic Switch is in compliance with European Directives 2014/53/EU (RED) and 2011/65/EU (RoHS).  
The full text of the EU declaration of conformity is available on our website.



This product should be disposed of separately from unsorted municipal waste

